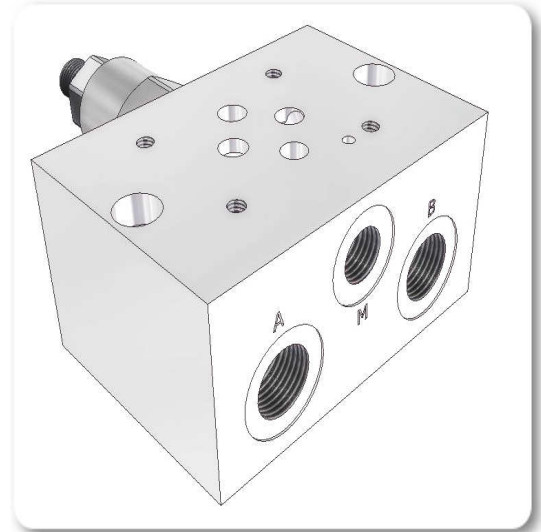


**STANDARD MANIFOLDS**

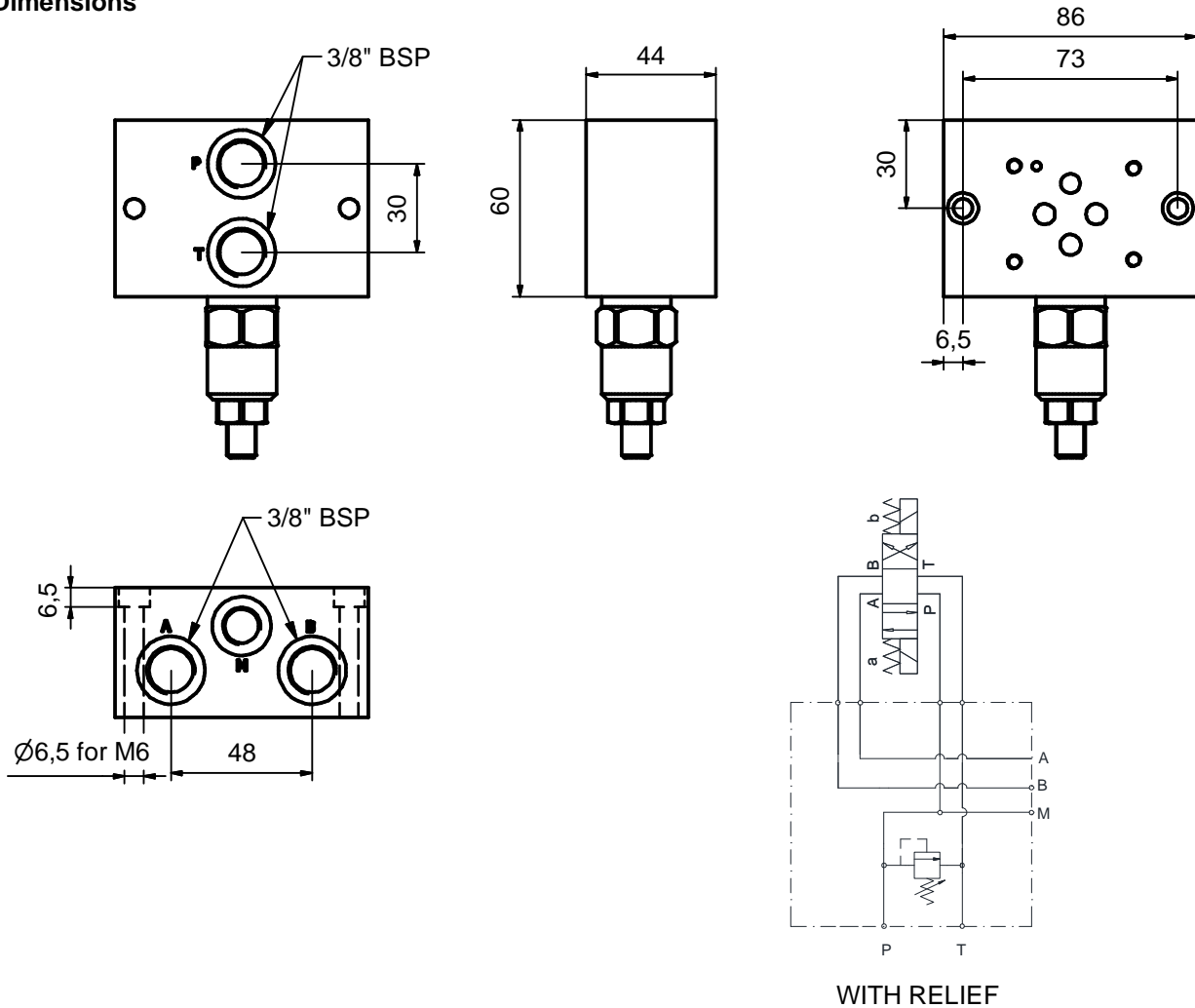
**HSS3-B1-3333-R**

**Technical features**

<b>HSS</b>	HYDRAULIC SINGLE SUBPLATE
<b>3</b>	3 ( CETOP 3 / NG6 )
<b>B1</b>	<b>B</b> ( P,T : BOTTOM - A,B : SIDE SURFACE ) 1 ( 60x44 mm)
<b>3333</b>	P,T,A,B (3333) : 3/8" BSP
<b>R</b>	WITH RELIEF



**Dimensions**



Material: Aluminium

STANDART CODE	WEIGHT (kg)	PRODUCT CODE
HSS3-B1-3333-R	1,530 kg	S110300